

MICRO SWITCH

A DIVISION OF BURGESS-HONEYWELL REGULATOR COMPANY
FREEPORT, ILLINOIS
FED. MFR. CODE 91929

SWITCH - ENCLOSED

CATALOG LISTING

EX-CR ★

THIS DRAWING COVERS A PROPRIETARY ITEM AND IS THE PROPERTY OF MICRO SWITCH, A DIVISION OF HONEYWELL. THIS DRAWING IS NOT TO BE COPIED OR USED WITHOUT THE APPROVAL OF MICRO SWITCH.

M

(M) EX-CR
ISSUE 9

EX-CR

M

DRAWING NUMBER

23

ISSUE

13

RELEASE NO.

27APR05

AK

CHECK

57

REVISIONS

A C.O. 11034

N.H.L. 28 DEC 56

B C.O. 15608

M.B.F. 9 FEB 61

C C.O. 16851

M.B.F. 10 DEC 62

D C.O. 17653

H.B.W. 24 FEB 64

E C.O. 18276

M.B.F. 18 JUNE 64

F C.O. 19878

R.E.R. 17 OCT 66

G C.O. 26103

D.L.F. 17 JUL 69

H C.O. 31559

G.L.H. 18 JUN 73

J C.O. 38360

C.S.H. 9 NOV 85

K C.O. 61381

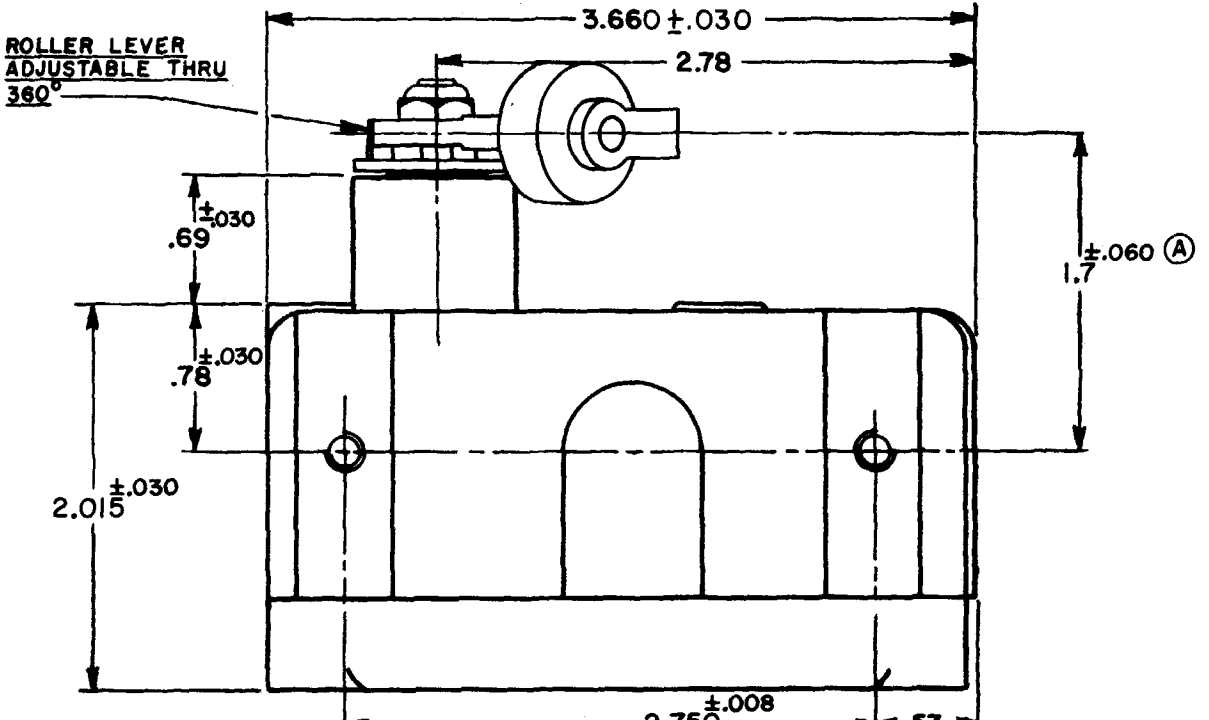
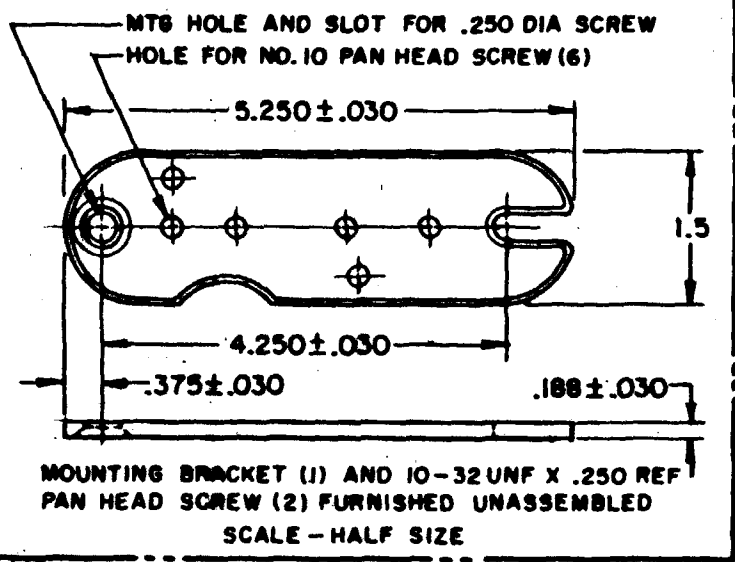
D.A.W. 28 APR 87

DRAWN

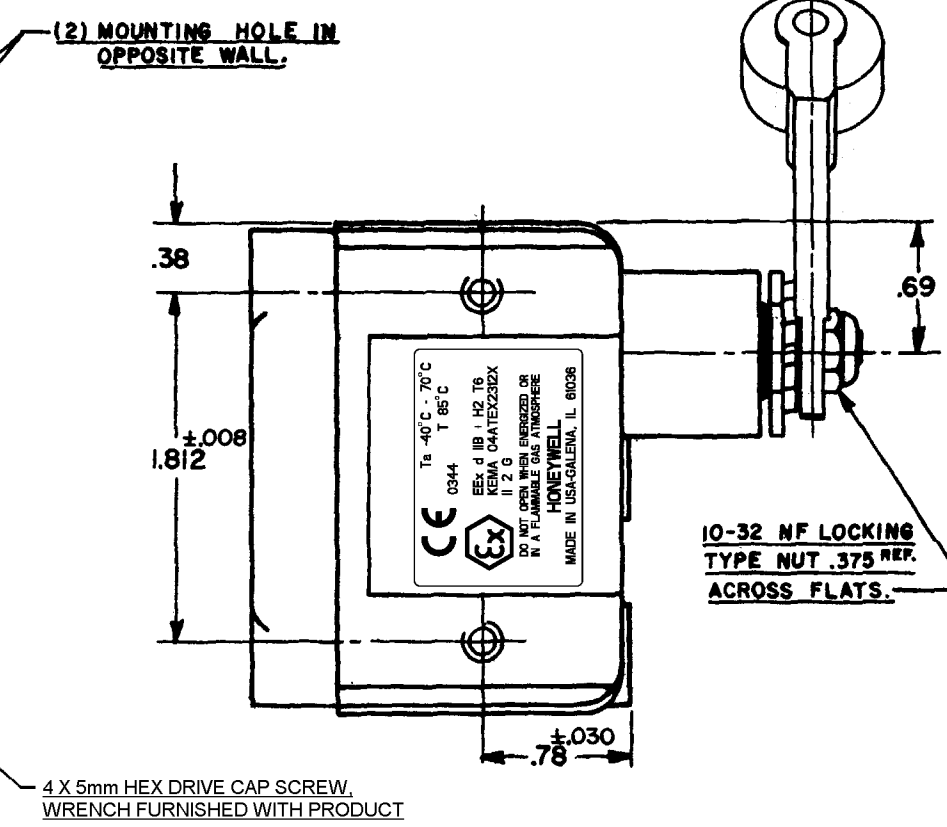
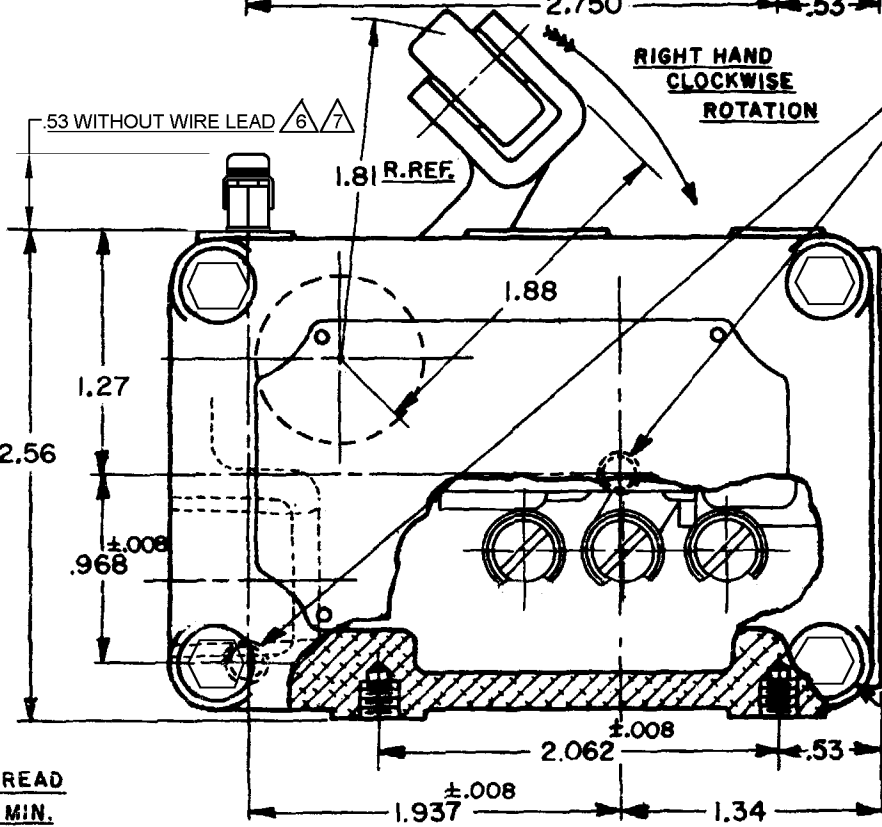
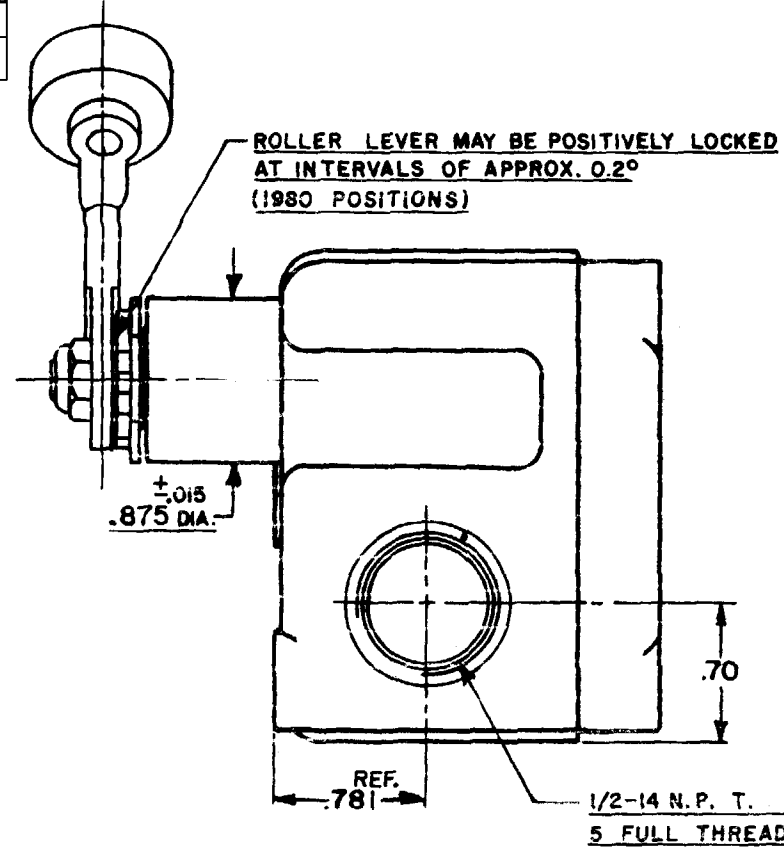
N.H.L. 28 DEC 56

CHECK

67



.750^{REF} DIA. X .312^{REF} WIDE ROLLER
MADE OF NON-SPARKING WEAR
RESISTANT MATERIAL



| CHARACTERISTICS | |
|-----------------------------|------------------|
| OPERATING FORCE | 1/2 - 1 1/4 LBS. |
| RELEASE FORCE | 1/4 LB. MIN. |
| PRETRAVEL | .219 MAX. (8°) |
| DIFFERENTIAL TRAVEL | .007 MAX. (1/4°) |
| DO NOT OVERTRAVEL MORE THAN | 90° |
| SWITCH-BASIC REPLACEMENT | BZ-2R-P4 |

| ELECTRICAL DATA | |
|---------------------|---|
| CONTACT ARRANGEMENT | S.P.D.T. |
| -L96- | 15 A-125, 250, OR 480 VAC 1/2 A-125 VDC; 1/4 A-250 VDC 1/8 HP-125 VAC; 1/4 HP-250 VAC |

| SCALE FULL | |
|---|-------|
| DO NOT SCALE PRINT | |
| UNLESS OTHERWISE SPECIFIED DIMENSIONS ARE IN INCHES | |
| TOLERANCES ARE: | |
| ONE PLACE (.0) | ±.030 |
| TWO PLACE (.00) | ±.018 |
| THREE PLACE (.000) | ±.008 |
| ANGLES | ± |
| WEIGHT | |

NOTE-
 1 - (8) MOUNTING SCREW HOLES, 10-32 NF-2B THREADS X .219^{REF} DEEP.
 2 - 8-32 NC X .219^{REF} TERMINAL SCREWS AND CUPWASHERS.
 3 - EXPLOSION PROOF - UNDERWRITERS LAB, INC. LISTED FOR HAZARDOUS LOCATIONS NEMA 7, CLASS I, GROUPS C AND D, NEMA 9, CLASS II, GROUPS E, F AND G.
 4 - EUROPEAN HAZARDOUS LOCATIONS DESIGNATION: EEx d IIB + H2 T6 CATEGORY II 2 G
 5 - SEAL RATING: NEMA 1

△ EXTERNAL GROUND SCREW MAY BE ASSEMBLED TO ANY UNUSED MOUNTING SCREW HOLE
 ▽ ASSEMBLE PROVIDED SPLIT LOCKWASHER BETWEEN GROUND LUG AND HOUSING

